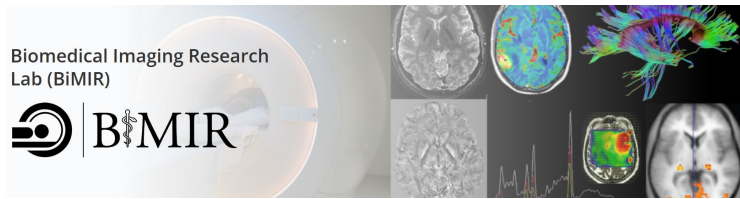


# Postdoctoral Position in Advanced Neuroimaging and Clinical Translation



**UT Southwestern**  
Medical Center

A postdoctoral training position in **advanced neuroimaging MRI and translational applications** is available in the **BioMedical Imaging Research Lab (BiMIR)** in the Advanced Imaging Research Center (AIRC) at UT Southwestern Medical Center. There are several funded projects with established collaboration in the following topics.

- **In vivo histology:** advanced MRI acquisition, reconstruction and analysis methods in quantitative and ultrahigh resolution MRI [T1, T2, T2\* and magnetization transfer, myelin and iron] to establish early-stage biomarkers in Alzheimer's disease and Multiple Sclerosis.
- **Neuro-fluid imaging:** detection of water exchange between cerebrospinal fluid and brain tissue in the recently discovered glymphatic system and its application in Alzheimer's disease and cerebrovascular disorders.
- **Mesoscale functional MRI** with high spatial and temporal resolution

## Qualification

- **Required:** a recent Ph.D. degree in Biomedical Engineering, Physics, Electrical Engineering or other related fields
- **Required:** strong motivation and passion in research and discovery
- **Required:** experience of computer programming using one of MATLAB, Python, C/C++, etc
- **Preferred but not required:** knowledge in MRI physics and imaging principles; MRI sequence programming

AIRC is a world-renowned imaging research center with cutting edge facilities and collaboration in basic and clinical research throughout the UTSW campus. AIRC is equipped with multiple research-dedicated MR scanners, including one human 7 T (Philips), three human 3 T (Philips, Siemens and GE) and three small animal MRI (4.7T, 7 T, 9.4T), an RF engineering lab, etc. A new Siemens Cima.X scanner is expected to be installed in 2025.

Information on our postdoctoral training program, benefits, and a virtual tour can be found at <http://www.utsouthwestern.edu/postdocs>.

Interested individuals should send a CV, statement of interest, and a list of three references to:

Jiaen Liu, Ph.D.

*Texas Instrument Endowed Scholar in Advanced Imaging Technology*

*ISMRM Junior Fellow*

UT Southwestern Medical Center

5323 Harry Hines Blvd.

Dallas, TX 75390-8568

[Jiaen.Liu@UTSouthwestern.edu](mailto:Jiaen.Liu@UTSouthwestern.edu)

Lab website: <https://labs.utsouthwestern.edu/liu-jiaen-lab>

*UT Southwestern Medical Center is committed to an educational and working environment that provides equal opportunity to all members of the University community. As an equal opportunity employer, UT Southwestern prohibits unlawful discrimination, including discrimination on the basis of race, color, religion, national origin, sex, sexual orientation, gender identity, gender expression, age, disability, genetic information, citizenship status, or veteran status. To learn more, please visit [here](#)*